



2021 Annual Report



COMMUNITY FOUNDATION
of ABILENE



Katie Alford, President/CEO
Jeff Blanks, CPA, Board Chair

Responsibility is often equated with the *ability* to respond.

Part of our mission is to “respond to community needs.” This facet of our mission has been on full display over the past fiscal year as our fundholders, community donors, volunteer grant committees, local nonprofits and staff responded to a variety of emerging needs.

Together, we quickly mobilized funding to support pressing needs brought on by: the COVID-19 pandemic, the February winter storm, an apartment fire that displaced dozens of people, and other events that abruptly altered livelihoods.

The impact was unprecedented! The combination of our responsive, unrestricted grantmaking along with grants made from all of our other fund types resulted in **\$13.4 MILLION** in grants to charitable causes. That’s a 34% increase in grants over our previous fiscal year.

This response was not something CFA accomplished on our own. It took a community. Our fundholders recommended grants from their funds to support nonprofits meeting important needs. Partners like Beltway Park Church made significant contributions to increase our unrestricted grantmaking. Our volunteer grant committees and board of trustees made quick and thorough decisions to award grants. Nonprofits diligently used the funding to serve people with the greatest needs. And our staff worked tirelessly to set it all in motion.

Such a profound level of impact is a true testament to the power of endowment and our community’s determination to take care of our neighbors.

Because endowments are designed to grow, this sustainable model of philanthropy strongly positions the foundation and our fundholders to respond when our community needs it most. We liken this growth to a well-nourished tree that grows and puts off fruit year after year. Look at the tree on the cover of this report. The trunk represents a person. The vast expanse of leaves and fruit represents the perpetual impact that person’s single gift can make year after year, for impact that lasts.

More than anything, as I look back on the past year, I want to say thank you. Thank you for the role you have played in responding to local needs. We look forward to continued work with the amazing people of our community as we continue moving towards our vision for a thriving Abilene, endowed forever.

We are honored to be your Community Foundation of Abilene.

Katie Alford
President/CEO

**“We liken
this growth to a
well-nourished tree
that grows and puts
off fruit year after
year.”**



COMMUNITY FOUNDATION
of ABILENE

2020-2021 *Historically Impactful Year*

Timeline of Impact Highlights

September 2020 — Field of Interest Grants: \$122k
Grants from the field of interest grant cycle supported nonprofits offering programs to enhance mental health, maternity care, and homeless animals. *More on field of interest funds on pages 5 and 13.*

October 2020 — Combined Grant Cycle to Meet COVID-Related Needs: \$929k
We combined fall '20 and spring '21 discretionary grant cycles to quickly help as many nonprofits affected by the pandemic as possible. Community partners like Beltway Park Church and our donor-advised fundholders also contributed a significant amount to this grant cycle. The grant total was a 48% increase over FY20 grant cycles! *More on grants on pages 12-13.*

November 2020 — Expedited Future Fund Grant Cycle: \$90k
We also adjusted our Future Fund grant cycle to more quickly deploy funding to nonprofits serving children and youth during the pandemic. This grant cycle typically happens in January. *More on Future Fund on page 16.*

February 2021 — Apartment Fire Response: \$20k
When an apartment fire displaced dozens of people in February, CFA and our fundholders responded with grants to the Christian Service Center of Abilene and the American Red Cross to provide immediate needs for these families.

February & March 2021 — Winter Storm Grants: \$219k
When the brutal winter storm hit, we quickly responded by giving our donor-advised fundholders an opportunity to contribute grants from their funds for relief and recovery needs. We also contributed some unrestricted grants to support emerging needs. *More on winter storm response on page 11.*

April 2021 — COVID-19 Small Business Relief Grants: \$507k
CFA partnered with the City of Abilene and the U.S. Department of Housing and Urban Development to administer federal funds to small businesses that took a financial hit in 2020. *More on small business relief grants on page 10.*

May 2021 — Abilene Gives: \$1.9M
The community raised nearly \$2M for local nonprofits during Abilene Gives, a 24-hour day of giving hosted by CFA! *More on Abilene Gives on page 11.*

May 2021 — College Scholarships: \$625k
CFA awarded more than \$528K in college scholarships to area students from our donors' scholarship funds, the most ever in a single year! *More on page 11.*

June 2021 — Total Assets: \$180.4M
We closed fiscal year 2021 with an all-time high \$180.4M in total assets and awarded a record \$13.4M in grants! *More on assets on pages 14-15.*

Mission

The Community Foundation of Abilene empowers people to make a lasting charitable impact on our community.
We connect donors to causes they care about, manage strategic investments to preserve our endowments, make grants that align with donor intent, respond to community needs and provide philanthropic leadership to enhance Abilene's future, today.

Vision

A thriving Abilene, endowed forever.



© Copyright 2021 Community Foundation of Abilene. All Rights Reserved. Confirmed in Compliance with National Standards for U.S. Community Foundations.

The Power of Endowment



STEP #1

Donor makes a charitable gift to establish a fund



STEP #2

CFA invests the gift so the fund can grow



STEP #3

Grants are made each year from the earnings



STEP #4

The process repeats, and the impact is lasting!

Your fund can eventually grant out more money over time than the amount of your original gift!



Family Philanthropy

The Alexander Families' Giving Fund

Charitable giving has become a family affair for Jim Alexander and his children and grandchildren.

"We have a lovely history with the Community Foundation because of Dad," said Cathey Weatherl, one of Jim's daughters. "We have just seen the impact CFA has had on the community over the years."

Local philanthropy has long been important to Jim. He served as a founding Advisory Board member for CFA in 1985, and he and his late wife, Jerri, first became fundholders in 1987.

The Alexanders' emphasis on charitable giving over the years inspired the family's ensuing generations. In 2019, his children and grandchildren decided to engage in philanthropy together as a family, establishing the Alexander Families' Giving Fund at CFA.

"We have come together to share our vision, purpose, and values as a family, knowing that philanthropy and giving is a legacy that our parents have left us. They have modeled that beautifully over the years," said Cathey, speaking on behalf of the family.

The family members gather regularly to talk about what causes matter to them and to determine how best to support those values through the grants made from their fund.

Cathey says one reason they chose to establish their donor-advised fund with CFA is because of our thorough administrative oversight and organized grantmaking process.

"The administrative part has been such a relief. You all make us aware of needs within the community, and we can choose where the grants go and make an impact where there is a need. Plus, it has caused us to set our funds aside in a more organized way so we are best prepared to do the kind of giving we want to do."

The example Jim and Jerri set so many years ago has clearly resonated with the family in a way that will live on well into the future.

"We are so proud to have that model and legacy from our parents. It has been important to us for many years, and now the process is established in a way that can carry on through the generations."

20 plus

Grants from the Alexander Families' Giving Fund during FY21 supported more than 20 nonprofit organizations. The family also recommended grants to support February winter storm relief.



Nita & Steve

The Steve and Nita Slaton Fund for Humane Treatment of Animals

When we truly care about something and that passion runs deeply within us, our lives and legacies become a reflection of that passion.

"My late husband, Steve, always loved animals, especially cats," said Nita Slaton, who established an endowment fund in Steve's honor after his passing in 2020.

The Slatons decided years ago to one day leave funds to the Community Foundation of Abilene to create an endowment fund to provide medical care for animals. The Steve and Nita Slaton Fund for Humane Treatment of Animals is a field of interest fund designed to make grants to shelter animals in need of veterinary and medical treatment.

"We had taken a cat to Dallas several years ago to have cancer treatments, which were very costly. Steve wanted his fund to help with that kind of situation. He also wanted elderly people on fixed income to be able to have a pet and not be alone so much."

Nita previously worked as the Scholarships Director and later Operations Director at CFA, and she saw firsthand the lasting impact an endowment fund has on the causes donors care about.

"An endowment fund is a gift that keeps on giving," Nita said. "I was familiar with the processes used by the Community Foundation to assure the funds were administered in the most honest and trustworthy manner. I felt confident that the board of directors and the staff would manage our funds with the highest integrity."

Nita and Steve chose *field of interest* as their ideal fund type, since a field of interest fund makes grants to nonprofits serving the specific cause that matters to the donor. Nita can envision the impact their fund will have on pets and their owners, year after year, for many years to come.

"It is hoped that this fund will result in more pets being placed in homes of loving families and receive the care that will allow the pet to live a long and happy life."



*Above: Steve Slaton
with his cats.*

\$340k

Grants made to
local animal-related
causes from all CFA
fund types.

LEARN MORE ABOUT FIELD OF INTEREST FUNDS AT
cfabilene.org/fund-types

It's About the *Why*

Grantee Spotlight: Big Brothers Big Sisters

Behind all that we do in life is a *what*, *how*, and *why*. For the Community Foundation and our fundholders, the *what* is sustainable philanthropy; the *how* is the power of endowment paired with the impactful work of nonprofit grantees; and the *why* is...well, it's people like Jacob and Le'Danivon.

"One time, we went to the Rangers stadium, and it was really fun. And we spent the day there, and we got to see them play...It was really fun," said 13-year-old Jacob of one of his favorite memories with his mentor.

Jacob is a Little in the Big Brothers Big Sisters program, and it's safe to say he had one of those most exemplary Bigs (mentors) one could ask for – former Big Brothers Big Sisters of Abilene Market President Mark Rogers.

13-year-old Le'Danivon, also known as LD, is Jacob's friend and is matched with Dillon Cobb. Since the Cobb and Rogers families have such a close bond, Jacob and LD have gotten to spend a lot of time together.

"The most special moments are when they take you places that you hang out with family. It just makes you feel like you're a big part of the family with them," said LD.

LD and Dillon have been matched for three years, and Jacob and Mark were matched for four years before Mark's passing in March of 2021, an event that deeply affected Abilene. The ensuing show of support from our community, including CFA fundholders, is a true testament to the indelible imprint Mark's leadership leaves on countless lives.

Our donor-advised fundholders awarded more than \$33,000 in grants to BBBS during the spring months. \$13,000 of these grants were memorial gifts, and \$20,000 were gifts to BBBS during Abilene Gives in May. BBBS raised a whopping \$48,000 during Abilene Gives, a 60% increase over the previous year.

"The thing that's most overwhelming and wonderful about that is that you see the sense of community that Abilene has, but also the impact that Mark Rogers made in his life," said Talan Cobb, Dillon's wife and new Market President for BBBS Abilene.

In an almost storybook-like ending, Talan was selected as Mark's successor at BBBS, taking on the role previously held by the man she considered a best friend and mentor.



"Filling this space and carrying on this legacy, to this day, is the greatest honor of my life," Talan said.

The organization's impact on local youth under Mark's leadership also inspired CFA grant committees during our 2021 fiscal year. BBBS received a \$15,000 grant during CFA's fall discretionary grant cycle and an \$8,000 grant from the Future Fund grant cycle to support mentorship programs.

Talan describes the future she envisions as a result of the work BBBS is doing through these programs today.

"I really, really am hopeful that we see strong leadership happen in our community and that it spreads outside of Abilene. I hope we can look back on Littles that have been in this program that have lived into their potential and are changing the world."

That vision beautifully sums up the *why*. It's about the people whose lives are forever changed for the better thanks to local organizations and extraordinary,

once-in-a-lifetime leaders like Mark Rogers.

To the Bigs, CFA fundholders, and everyone who has supported nonprofits like BBBS, Jacob has a message.

"I want to say thank you for giving your time and your effort and your money to help people who need it. And thank you for making them feel safe."

With his knack for touting the value of the BBBS match program, Jacob just might be the future spokesperson for an organization – and on behalf of a mentor – that has meant so much to him.

"It's kind of like having a Big that you get to have fun with and hang out with, and they kind of show you and help you learn life lessons. It's just a lot of fun."

**LEARN MORE ABOUT OUR
VARIOUS GRANT TYPES AT**
cfabilene.org/grantmaking101



Above: Mark Rogers with Little Brother Jacob. Below: Cobb and Rogers families with Littles Le'Danivon and Jacob.



\$85k

Granted to
BBBS from all
CFA fund types
and Abilene
Gives in FY21.

Lota & Cary

Inspired Services Donor-Advised Fund

Lota Zoth and Cary Corthron are retired. Well, sort of. Since retiring from their careers, the married couple has devoted much of their time to volunteering and serving people. When they decided to create a donor-advised fund with the Community Foundation, they chose a fitting name for the fund.

"We named it *Inspired Services* because it is our passion, in the sunset of our professional lives, to provide inspired services, primarily in the form of volunteering in various ways to aid underprivileged individuals and families," Lota said.

Since establishing the fund in December 2019, the Inspired Services fund has made around 50 grants to various charitable organizations. Many of those grants were during Abilene Gives, a 24-hour day of giving CFA hosts to raise money for local nonprofits.

Donor-advised fundholders can recommend grants from their funds throughout the year to the causes they care about. They can even make grants to organizations participating in special giving opportunities like Abilene Gives and CFA's discretionary grant cycles.

"Grantmaking has been very simple and efficient, and we are excited about future grantmaking," said Lota.

Lota says establishing a donor-advised fund at CFA accomplishes two goals.

"The DAF itself allows us to provide financial assistance to those who are in need through contributions to nonprofit organizations whose missions align with our vision of inspired services. Putting our DAF at the CFA has been a tremendously simple method for us to give to the nonprofit community."

LEARN MORE ABOUT DONOR-ADVISED FUNDS AT
cfabilene.org/fund-types

\$567k

Grants from
donor-advised
funds contributed
during Abilene
Gives in 2021.

\$6.8M

Grants
awarded from
donor-advised
funds in FY21.

The endowment fund is not the only way Lota and Cary live out their passion for inspired services. Lota serves as the volunteer executive director and Cary is the volunteer maintenance and ranch manager for Camp Able, a local nonprofit dedicated to providing equine therapy for people with special needs and sanctuary to unwanted or neglected horses.



Community Impact



Congratulations to Lale for also being named 2021 Citizen of the Year by the Abilene Chamber of Commerce!

T&T Family Foundation **\$2 million** ***in Grants Milestone***

Lale Estes and her family reached a big milestone this year through their T&T Family Foundation donor-advised fund, surpassing the \$2M in grants mark. CFA manages this fund, and Lale is the primary fund advisor who recommends grants to local nonprofit projects that are meaningful to her.

To honor Lale and the family for this milestone, CFA surprised Lale with a special presentation at this year's Children's Art and Literacy Festival (CALF) donor dinner. We gave Lale a book filled with letters, photos and memories from local nonprofits she and the foundation have impacted over the years.

***Top Photo:** CFA Board Member Carolyn Beckham and husband John presented Lale with the Letters for Lale book at the CALF donor dinner in June. **Bottom Photo:** Lale with late husband B.J. Estes at the CFA donor open house in 2018. Lale and B.J. have also been devoted Friends of the Community Foundation for years.*



"To get this grant is like a light at the end of the tunnel!"

— Jorge

\$507k ***Granted to Small Businesses for COVID-19 Relief***

Many Abilene small businesses took a financial hit during the COVID-19 pandemic. To help offset these losses, CFA partnered with the City of Abilene this year to administer grants to small businesses that experienced loss in 2020. The City received funding and guidelines from the U.S. Department of Housing and Urban Development (HUD), and CFA managed the grantmaking process, awarding \$507k in grants.

***Photo:** Jorge Luis, owner of Don Luis Café. The restaurant received a grant through the Small Business Relief Grants program.*

A partnership of:



COMMUNITY
FOUNDATION
of ABILENE





Save the date for the next Abilene Gives! May 3, 2022 at abilenegives.org

Community Raises **\$1.9 million** During Abilene Gives

What a response from the community on May 5 for Abilene Gives! This was CFA's 5th year to host the 24-hour day of giving to support local nonprofits, and nonprofits raised nearly \$2M, a 30% increase over 2020.

Photo: Nonprofits participated in a live broadcast on KTAB TV during the Abilene Gives block party presented by First Financial Bank.

CFA **\$625k** in Scholarships Awards to Local Students

Each year in May, CFA awards college scholarships from donors' scholarship funds to local students. This year, we awarded more than \$625k in scholarships to 175 students in Abilene and surrounding communities, the most ever in a single year! Donors who establish scholarship endowments have a passion for education and get to determine the criteria for the scholarships awarded from their funds.

Photo: Recipients of the 2021 Big Country Athletic Hall of Fame Scholarships
Learn more about scholarship funds at cfabilene.org/fund-types



"It means the world to me."

— Tony

\$219k in Winter Storm Response Grants

The winter storm in February caused widespread damage for Abilenians. CFA quickly responded, giving our donor-advised fundholders an opportunity to contribute grants from their funds for relief and recovery needs. We also responded with some emergency unrestricted grants, granting a combined \$219k to local nonprofits in February and March for needs including: home repairs for low-income and uninsured homeowners, repairs to nonprofit infrastructure, and food and shelter for people in need.

Photo: Boots on the Ground commissioned extensive repairs to Tony Spagnoli's home after his pipes burst. See Tony's video story, and others, at cfabilene.org/impact.

Grants Fiscal Year 2021 July 1, 2020 — June 30, 2021

Total grants from all fund types: **\$13.4 million**

Unrestricted/Discretionary Cycle Grants:

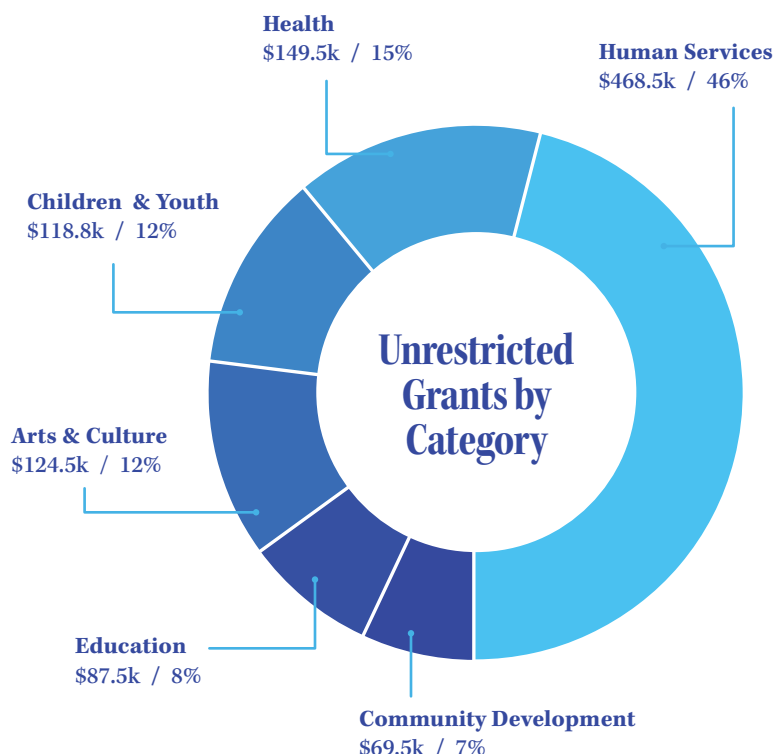
\$1,018,096

This is a 51% increase over FY20, thanks to responsive community donors and CFA fundholders!

Unrestricted Grants are from our Unrestricted fund types. These are funds our donors have entrusted to us to make the grantmaking decisions each year based on the ever-changing needs of our community.

The vast majority of grants from Unrestricted funds are awarded to local nonprofits through our discretionary grant cycles in the fall and spring. Donor-advised fundholders and any community member can also contribute to these grant cycles.

LEARN MORE AT
cfabilene.org/unrestricted



Unrestricted Grantees

Abilene Arts Alliance
Abilene Chamber of Commerce Foundation
Abilene Christian University
Abilene Community Theatre
Abilene Education Foundation
Abilene Hope Haven, Inc.
Abilene Independent School District
Abilene Performing Arts Company
Abilene Philharmonic
Abilene Police Foundation
Abilene Preservation League
Abilene Recovery Council
Abilene Restoration Ministries, Inc.
Abilene Youth Sports Authority
Abilene Zoological Society
Adult Protective Services Partners

All for One Missions
Alliance for Women and Children
Ben Richey Boys Ranch
Betty Hardwick Center
Big Brothers Big Sisters
Big Country CASA
Boots on the Ground, Beltway Park
Butman Methodist Camp & Retreat Center
Camp Able
Cancer Services Network
Center for Contemporary Arts
Children's Performing Arts Series
Chorus Abilene, Inc.
Christian Service Center of Abilene
City Light Community Ministry

Communities in Schools of the Big Country
Crime Stoppers
Cultura Local ABI
Disability Resources, Inc.
FaithWorks of Abilene, Inc.
Food Bank of West Central Texas
Friends for Life
Frontier Texas
Gladney Center
Global Samaritan Resources
Harmony Family Services
Hardin-Simmons University Educational Studies
Houses for Healing
Interested Citizens of Abilene North (I-CAN)
Jesus Family Network

Joseph Thomas Foundation
Junior Achievement of Abilene
Junior League of Abilene
Leukemia Texas
Make-A-Wish Foundation
McMurry University Theatre Department
National Center for Children's Illustrated Literature (NCCIL)
New Beginnings Big Country
New Horizons
Noah Project
Paramount Theatre
Parenthood Support
Phoenix ICCD Clubhouse
Pioneer Drive Baptist Church
Presbyterian Medical Care Mission
Regional Victim Crisis Center

Rusted and Weathered - West Texas Veterans Support Services
Safe Families for Children
Special Olympics Texas, Inc.
St. John's Episcopal School
St. Mark's Baby Room
Strength for Life Foundation
Swenson House
Taylor County History Center
Texas Ramp Project
The Grace Museum
The Salvation Army of Abilene
West Central Texas Workforce Board
West Texas Homeless Network
Wylie Independent School District
Young Audiences

Field of Interest Cycle Grants:

\$122,832

We awarded a total of \$623.6k in Field of Interest grants in FY21, \$122.8k of which was awarded via a special grant cycle for the endowment funds below. A Field of Interest fund allows the donor to choose a specific area of interest, and all grants from the donor's fund go to nonprofits serving that specific field.

Grants from Field of Interest Cycles in FY21:

\$82.1k

APC Endowment Fund for Mental Health

\$20.8k

Pat Meleen Vaughn Fund for the Humane Treatment of Animals

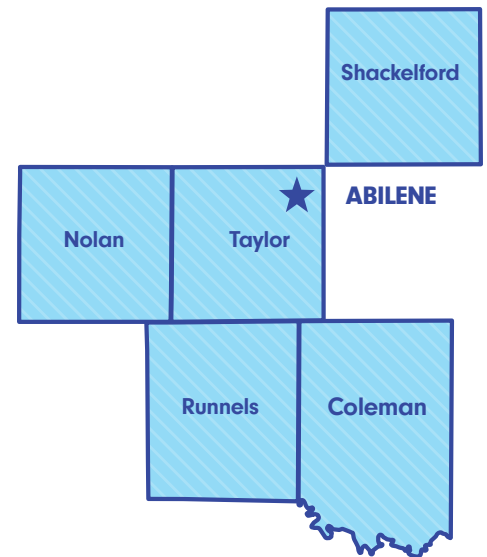
\$20k

Pat Meleen Vaughn Fund for the Celebration of Life

Field of Interest Grantees

Abilene Christian University
Abilene Police Department
Betty Hardwick Center
Camp Able
Center for Contemporary Arts
Christian Homes and Family Services
Communities in Schools of the Big Country
Ministry of Counseling and Enrichment
New Horizons
Pregnancy Resources
Regional Victim Crisis Center
Taylor Jones Humane Society
Texas Family Institute

Regional Foundation Funds



CFA has the ability to manage endowment funds established by another foundation. It's a great way to remove the administrative burden from a family or regional foundation so they can focus on the impact they wish to make.

LEARN MORE AT

cfabilene.org/foundation-management

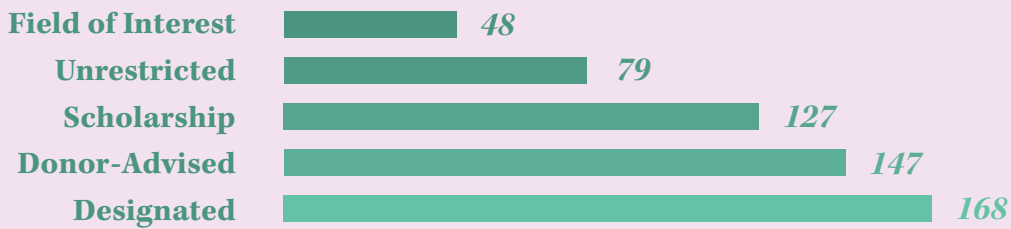
These are the regional foundations we manage & the amount of grants they made during FY20:

\$86.9k	AVJ Foundation
\$138.1k	Coleman County Foundation
\$20k	Friends of the Coleman County Foundation
\$5k	Nolan County Foundation
\$29.3k	Winters Area Foundation

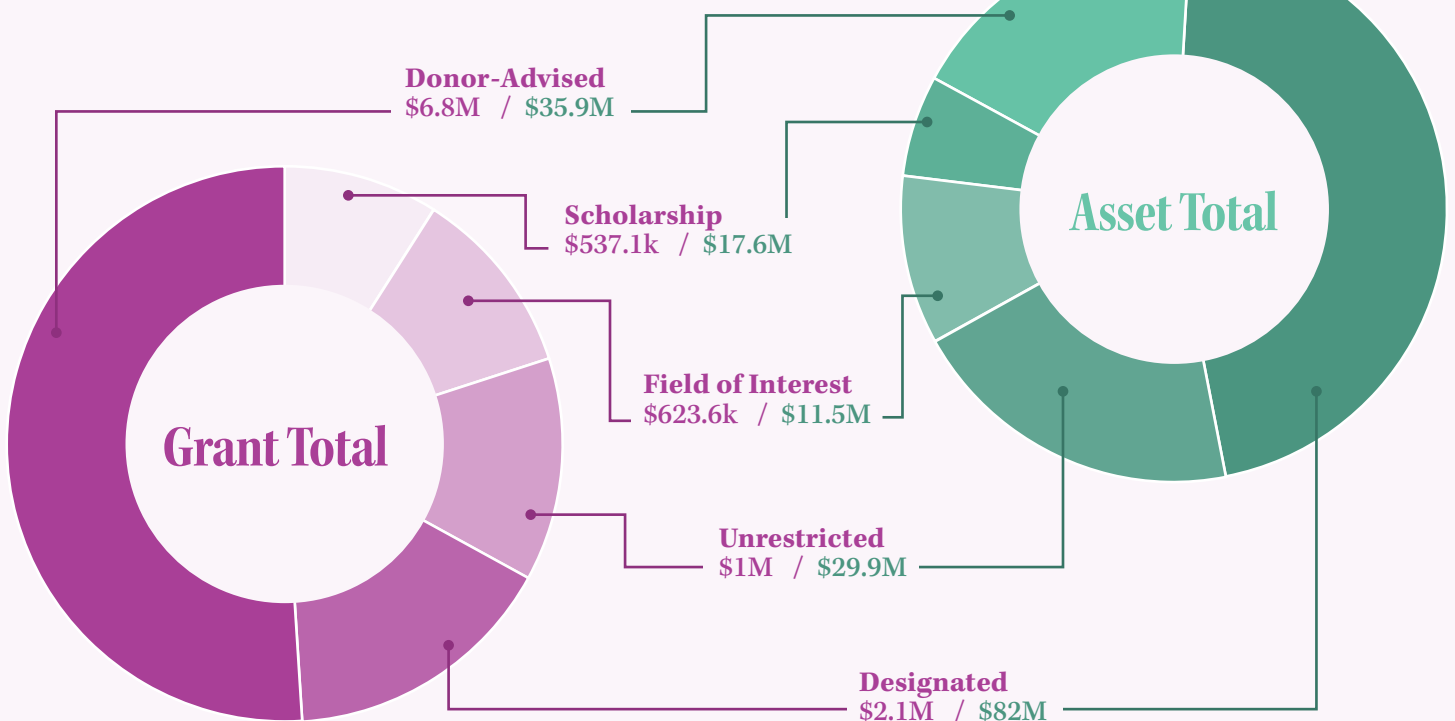
Total Assets & Financials

Total assets from all fund types: **\$180.4 million**

Number of Funds :



Assets and Grants by Fund Type



Consolidated Statement of Financial Position

JUNE 30, 2021 (with comparative totals for 2020)

	JUNE 30, 2021	JUNE 30, 2020
ASSETS		
Cash and Cash Equivalents	\$ 8,133,418	\$ 3,608,597
Contributions Receivable	312,265	343,551
Investments	168,584,739	131,515,662
Cash Value of Life Insurance	747,442	607,811
Fixed Assets	2,611,291	2,702,071
Other Assets	50,780	43,036
TOTAL ASSETS	\$ 180,439,935	\$ 138,820,728
LIABILITIES		
Accounts Payable	\$ 17,059	\$ 29,474
Grants Payable	364,500	589,597
Funds Held as Agency Endowments	30,404,762	23,106,909
TOTAL LIABILITIES	\$ 30,786,321	\$ 23,725,980
NET ASSETS		
Fund Balance	\$ 149,653,614	\$ 115,094,748
NET ASSETS	\$ 149,653,614	\$ 115,094,748
TOTAL LIABILITIES & FUND BALANCES	\$ 180,439,935	\$ 138,820,728

AUDIT The Foundation annually engages the services of an independent accounting firm to perform an audit of the Foundation's Financial Statements. As part of its audit, the firm also reviews the internal controls and various policies and procedures to ensure the Foundation staff is adhering to the most current accounting practices. The Foundation's auditor, Condley and Company, LLP, Certified Public Accountants, has issued an unqualified opinion on the Financial Statements for the fiscal year ended June 30, 2021. Audits and the IRS Form 990s are available upon request.

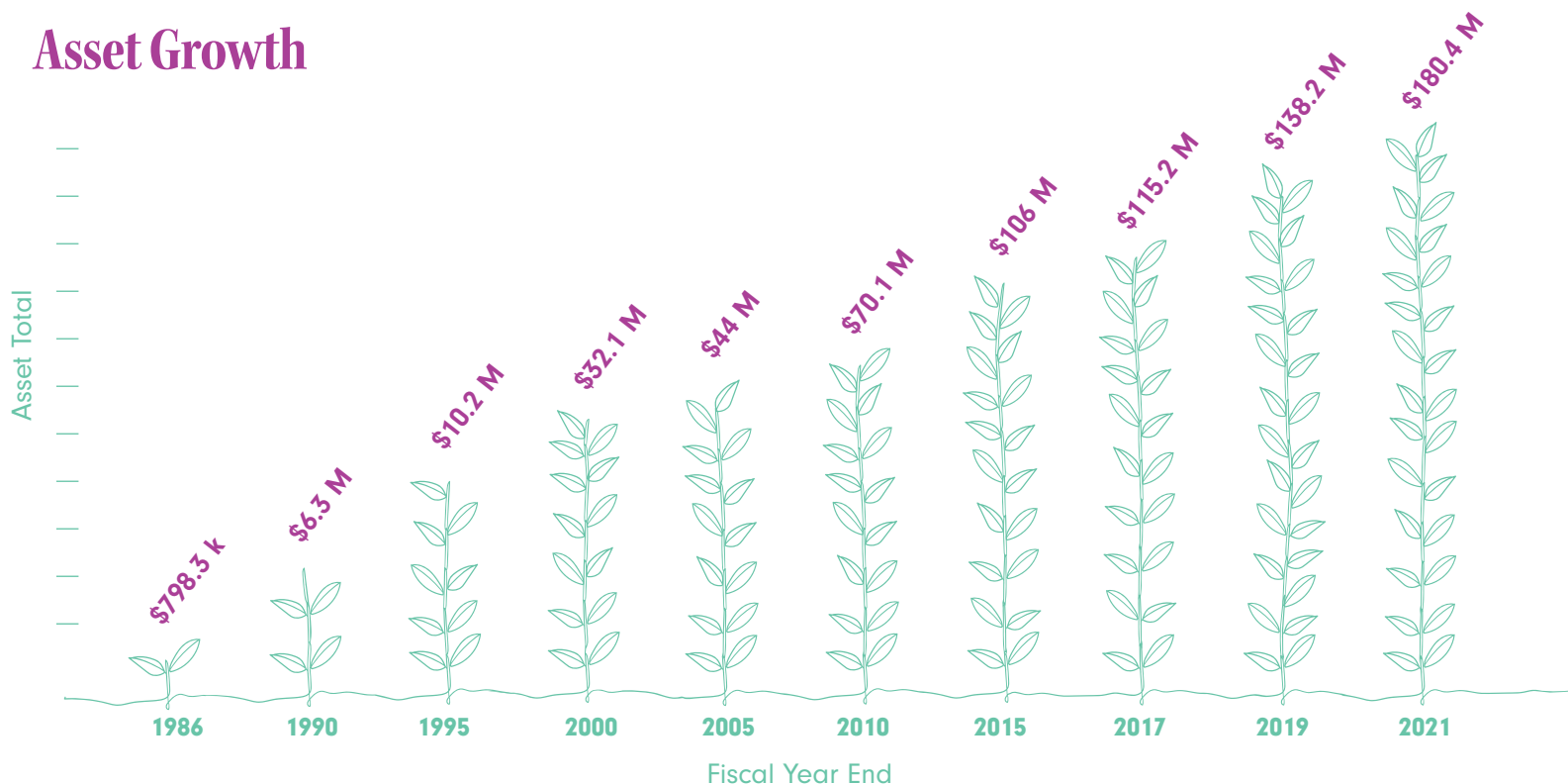
INVESTMENT RETURNS – FISCAL YEAR 2021

(as of June 30, 2021)

	1 Year	3 Year	5 Year	7 Year	10 Year
CFA	33.5%	11.8%	11.7%	8.2%	8.4%
Target Weighted Benchmark*	28.5%	10.8%	10.6%	7.4%	7.9%

*25.0% Russell 3000 Index, 25.0% MSCI AC World ex-US Index, 15.0% Bloomberg Barclays U.S. Aggregate Index, 15.0% HFRI Fund of Funds Index, 2.5% Thomson One Buyout Index, 2.5% Thomson One Venture Capital Index, 5.0% Thomson One Distressed Index, 2.5% S&P North America Natural Resources Index, 2.5% Thomson One Private Natural Resources Index, 2.5% S&P Developed BMI Property Index, and 2.5% Thomson One Private Real Estate Index.

Asset Growth





Future Fund is a membership-supported endowment fund of the Community Foundation of Abilene to benefit local children and youth.

How it Works



\$250 a year for an individual or couple to become a member.



Membership dollars are pooled into the endowment.



The money is invested, allowing the fund to grow.



Revenue is used to make grants to nonprofits serving local children and youth!

Future Fund Grantees

\$90.7k total

Abilene Arts Alliance
Abilene Christian University
Abilene ISD
Abilene Performing Arts Company
Abilene Philharmonic Association
Abilene Zoological Society
Alliance for Women & Children

AMBUCS Abilene Big Country Chapter
Big Brothers Big Sisters
Big Country CASA
Big Country Home Educators
Boys and Girls Club of Abilene, Inc.
Camp Able
Center for Contemporary Arts

Children's Performing Art Series
Chorus Abilene
City of Abilene Recreation Division
Cultura Local ABI
International Rescue Committee
Joseph Thomas Foundation
Junior Achievement

National Center for Children's Illustrated Literature (NCCIL)
New Horizons
Regional Victim Crisis Center
Safe Families for Children
Taylor County History Center
The Grace Museum
Young Audiences



The Friends of the Community Foundation of Abilene is a core group of supporters whose membership contributes to our operational costs, allowing us to serve as an even stronger resource for the community.

An example of an initiative our Friends make possible is our CFALearn series. We offer these quarterly educational workshops for local nonprofits, equipping them with the knowledge and run successful, impactful organizations.



Nonprofits learned about strategic storytelling during a CFALearn workshop in July. Friends membership starts at \$200/year for an individual or couple. Learn more at cfabilene.org/friends

Barbara and Lynn Anderson	Scott Dueser	J.V. and Gerald Johnson	Karen and Jack Rich
Yvonne and Ron Batts	Laurie and Bob Eagle	Patsy and George Jones	Diana and Miller Richert
Carolyn and John Beckham	Jean Kay and Chuck Erwin	Nancy and Ross Jones	Mary Ross
Julie and Rob Beckham	Lale Estes	Jane Jones	Lila and Bill Senter
Peggy Beckham	Shellie and Sam Evans	Wendy and Scott Kilmer	Michelle and Scott Senter
Paula and Russell Berry	Star and Ray Ferguson	Leigh and Greg King	Debbie and Steve Senter
Debbie and Downing Bolts	Doris and Don Fitzgibbons	Dottie and Gilbert Korman	Suzie and Gary Shahan
Rhonda and Leroy Bolt	Ann and Doug Ford	Nanci Liles	Marelyn and Glen Shedd
Lou and Robert Briley	Deonna and Gary Galbraith	Louise and Robert Lockhart	Nita Slaton
Nancy Brock	Gerald Galbraith	Marilyn and K.O. Long	Laura and Eddy Smith
Donna and Tommy Broyles	Mary and Bob Gee	Jackie and Roger Love	Kim and Jim Snyder
Glenda and David Buhrmann	Jeff Goodin	Libby and Kenneth Martin	Kaye and Dick Spalding
Lynda and Bart Calcote	Vicki and Jeff Graham	Ellen and Kirk Massey	Patsy and Jerry Strader
Ruth and Lee Caldwell	Rhonda and Tim Graves	Chris and Kade Matthews	Cindy and Mike Sullivan
Kelly and Paul Cannon	Gayle Gray	Gloria McDaniel	Karen and David Swearingen
Jo and Joe Ed Canon	Beverly and Russell Guthrie	Doris and Bobby Melson	Jana and John Thacker
Nancy and Jay Capra	Carol and Lanny Hall	Pam and Royce Money	Jane and David Todd
Nell and Jerry Carter	Rae Ann and Lee Hamilton	Becky and Ronnie Nail	Mary and Zane Travis
Linda and Sam Chase	Callie and Lee Hampton	Tootsie and George Nichols	June and Jimmy Walker
Dewayne Chitwood	Abbi and Andrew Harmon	Danna and Eric Oliver	Cathey and Rick Weatherl
Joy and Glen Churchill	Molyan Haynes	Don Paige	Kathy and Jim Webster
Cay and Steve Collins	Holly and Jim Hays	Aida, Kevin and Katie Pantoja	Amy and John Willey
Lynette and Charles Coody	Becca and Scott Hibbs	Mindy and Jason Patterson	Frances and Doug Williamson
Laura and Dave Copeland	Linda and Barry Hoefer	John Pearson	JoAnn and Randy Wilson
Carol and Vic Corley	Edwina and Loyd Hopper	Shirley and John Poe	Bernice and Bobbie Wolfe
Lota and Cary Corthron	Annabel House	Dot Pope	Bill Wright
Roxy and Bill Cox	Glynell Hughes	Lela and Jim Porter	Bev and Don Wright
Jana and Joe Crawford	Melody Hunt	Jack Ramsey	Jeannie and Mike Young
Lynn and Bud Darby	Tina Hunter	Charlotte and Harry Reaugh	



Future Fund member families and Friends of the Community Foundation gathered over the summer for a membership celebration at the Abilene Zoo. The Zoo has been a Future Fund grantee, receiving funds to support Dreamnight, a special event for families of children with special needs.



Future Fund awarded a \$5k grant to the Center for Contemporary Arts to support summer ArtCamps. The Center used the funds to provide scholarships for low-income children to attend camps and to purchase new cameras for PhotoCamp.



Dear, Center for Contemporary Arts,
Thank you so much for allowing me to attend the art camps on scholarship the last three weeks. I had a lot of fun and learned a lot. So thank you for letting me go for free.
Thank you

Future Fund Lifetime and 2021 Members

3rd Street Printing

Jodie and Nick Arrott
Samantha and Wade Baker
Timber Barkley
Mitch Barnett
Catherine and Alan Barr
Carolyn and John Beckham
Julie and Rob Beckham
Jeannette and Josh Black
Roberta and Edward Brandecker
Kristen and James Bridwell
Teresa and Gray Bridwell
Aliza and Chris Brooks
Katie and Cade Browning
Lorlei and Ron Butler
Christie and John Callahan
Kelsey and Andrew Caprio
Christine and Brandon Carr
Gracie Carroll
Nichole and Jeff Casey
Lisa Chavez
Megan and Kelly Cheek
Laura and Will Christoferson
Mary and Phil Christopher
Cay and Steve Collins
Mary and Vance Cooksey
Laura and Dave Copeland
Carol and Vic Corley

Caroline and Travis Craver
Lynn and Bud Darby
Holly and Gil DeShazo
Megan Dobbs
Trish and Jeff Dressen
Laura and Ted Dyer
Larry Ellis
Mandy Ellis
Lale Estes
Shellie and Sam Evans
Lindi and Kyle Felan
Evelyn and Joe Ferguson
Jennifer and Michael Fernandez
Pat and Don Fite
Tami and Bryson Galloway
Celina and Amador Gamez
Libby and Ryan Gibson
Mandy and Paige Gollihar
Rhonda and Tim Graves
Cara and Mykal Green
Beverly and Russell Guthrie
Ashley and Jason Hall
Callie and Lee Hampton
Lindsay and Jay Hardaway
Abbi and Andrew Harmon
Kaye and Joe Hawkins
Margaret and Brian Henslee
Becca and Scott Hibbs

Randalyn and Andrew Houser
Erica and Daniell Jara
Wendy and Scott Kilmer
Sherette and Stephen Kimmel
Jeffrey and Laurin Kocurek
Tiffany and Scott Lamb
D'Lynn and Travis Lane
Diana and Mark Layton
Christie Leedy
Paige and Philip LeMasters
Ashley Liebel
Debbie and Tim Lillick
J'Dana and Tom Lindley
Jessica and Russell Lorling
Libby and Kenneth Martin
Nancy and Michael Matthew
Amy and Rocky McAdams
Jasmine and Regi McCabe-Gossett
Karla and Andy McCall
Candice and Forrest McCray
Sydney and Charles McKinney
Claire and Sam Mehaffey
Kim and Tony Melnyk
Kim and Jay Miers
Jamie and Shannon Miers
Elizabeth and Aaron Miller
Laura Millican
Micah and Taylor Neatherlin

Julianna and DonMark Nickson
Angela Nicolini
Kim and Steve Nussbaum
Kassidy and Ricky Nygaard
Lanny Owens
Patrizia and Robert Pelfrey
Kim and Mark Phelan
Amanda and David Pittman
Angel and Norm Poorman
Dorothy and Kerry Preston
Ashley and James Puryear
Rachel and Chris Riley
Andrea and Aaron Robison
Callie and Austin Roeder
Jenn Rogers
Brittany and Ben Salmon
Cheryl and Jason Sawyers
Sue and Eric Schackmuth
Erin and Cactus Schroeder
Michelle and Scott Senter
Shawn Senter

Leslie and Shay Senter
Debbie and Steve Senter
Molly and Chase Sims
Laura and Eddy Smith
Holly and Andy Stoebner
Logan and Taylor Sturgis
Cindy and Mike Sullivan
Jill and Brett Teague
Akane and Matt Thaxton
Sam Townsend
Sheila and Mike Warren
Ramie and Joel Wilks
Amy and John Willey
JoAnn and Randy Wilson
Candice and James Wisner
Tracy and Richard Wolfe
Donna and Terry Wolfer
Traci and Tim Yandell
Jane and Greg Yost
Reed Young

LEARN ABOUT MEMBERSHIP OPTIONS AT
cfabilene.org/futurefund

Names in italics indicate board members
Names in bold indicate lifetime members

Impacting Community Today & Tomorrow



"JOY is the word that comes to mind when asked why I would leave what little wealth that I have to support Abilene arts organizations. The reason is simple: the Arts in Abilene have given me so much JOY over the years, and I want the JOY of knowing that I can play some small role in making sure the Arts in Abilene continue to thrive when I'm gone. I was so glad to learn how a single endowment fund with the Community Foundation of Abilene could provide funds in perpetuity for more than one of these organizations who have given me so much JOY over the years. That makes me JOYFUL."

— Larry Wolz, CFA Legacy Society Member

Every donor makes an impact. Some donors have a vision *today* for the legacy of impact they want to leave for their community *tomorrow*.

The Community Foundation of Abilene's Legacy Society is a group of donors who have chosen to make CFA a beneficiary of their estate, because they care about making a charitable impact for years to come. Leaving funds to establish an endowment fund translates to a lasting source of grants for the charitable causes that matter to the donor.

Imagine what *tomorrow* could look like if we all left at least **5%** to charitable causes in our *community*.

Leave 5 is a CFA-led initiative to encourage people to pledge to leave at least 5% of their estates to the charitable causes they love in our local communities.



CFA commissioned a study in 2019 showing the potential transfer of wealth in part of the Abilene region (*Taylor, Nolan, Runnels, Shackelford and Coleman counties*) over the next 10-50 years. Here's a glimpse of the potential impact we can make on our communities.

CURRENT HOUSEHOLD
NET WORTH:

**\$45.5
billion**

TRANSFER OF WEALTH

\$7.9 billion

OVER 10 YEARS

\$59.4 billion

OVER 50 YEARS

Capturing just 5% of the 10-year transfer potential could create \$395 million in new endowments. Over 20 years, this endowment could support average annual grantmaking of nearly \$22 million

That's a significant impact on programs that enhance workforce, housing, literacy, arts, feeding, education and more!

Legacy Society

These members have named CFA as a beneficiary through their estate.

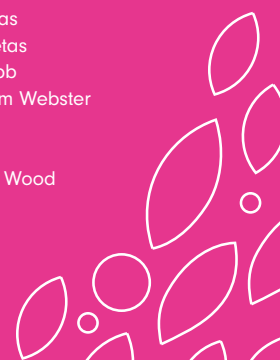
Katie and Jason Alford
Grady Barr
Ann Bridwell
Nancy Brock
Caroline Cammack
Kelly and Paul Cannon
Jo and Joe Ed Canon
Mary Lynn and Jimmie Cantrell
Carl Childers
Thomas W. Choate
Joy and Glen Churchill
Kenneth L. Conrad

Mary and Vance Cooksey
Jackie and Bart Cox
Jana and Joe Crawford
Kay Denkhoff
Rudith Drennan
Mike Dudley
Lale Estes
Linda and Glenn Files
Ann and Douglas Ford
Loretta Fulton
Nina Gifford
Mary and Larry Gill

Callie and Lee Hampton
Robert Hanna
Dr. Patricia Hernandez
Patricia and Delbert C. Hess
Marilyn J. Jacobs
Myra and Paul A. Johnson
Phillip P. Johnson
Jane P. Jones
Nancy and Ross L. Jones
Saranne and Benny Judkins
Rozlyn and Jerry Love
Gloria McDaniel

Kathy and Philip Morehead
Angela Nicolini
Cynthia Pearson
John E. Pearson
Wanda Ragsdale
Becky and Jack Rentz
Karen and Jack Rich
Michelle and Scott Senter
Nita Slaton
Donnie Smith
Norma (Sug) Springer

James D. Tittle
Jamie Villegas
Courtney Vietas
Rhonda Webb
Kathy and Jim Webster
Linda White
Larry Wolz
Bill and Joni Wood
Bill Wright



Designated Endowment Funds | \$2,053,794 awarded

Donor Designated

Donors establish these funds to specify that the income or assets support a specific charitable organization.

12th Armored Division Memorial Museum Fund	Douglas and Ann Ford Fund for Disability Resources, Inc.	Wade Scoggins Memorial Fund for Young Life of Abilene
Abilene A&M Club Fry Booth Project Fund*	The Grace Museum	Herbert A. and Emma Bell Seidel and W. Alan Swagerty Fund for Meals on Wheels
Abilene Education Foundation Fund	The Grace Museum Building Maintenance	Senter Family Fund for Abilene Hope Haven
Abilene Heritage Square Project Fund (<i>non-endowed</i>)	The Grace Museum Director's Endowment	Shackelford County Community Resource Center
Abilene Philharmonic Fund	Paul and Sara Graham Fund for McMurtry Basketball	Major Charles Paul Shearn, III Memorial Fund for Shearn Elementary, Houston, TX
Abilene Police Foundation (<i>non-endowed</i>)	Robert and Anita Herren Memorial Fund for Haskell	Ruby Shelton Endowment Fund for the Alliance for Women and Children
Anton Family Designated Fund	Robert and Marilyn Hitt Charitable	Hudson and Martha Smart
Carolyn and Harwell Barber Fund for United Way	Home Again West Texas (HAWT) (<i>non-endowed</i>)	Dick and Kaye Spalding Fund for Serenity House
Beckham Family Fund for Ben Richey Boys Ranch	Homeless - Abilene Coalition (<i>non-endowed</i>)	St. John's Episcopal School
Beitscher Family Fund for the Abilene Philharmonic Association	ICAN Curtis Home Project Fund (<i>non-endowed</i>)	St. John's Episcopal School Excellence
Catherine M. Benson and Joseph Chaffin Benson Fund for the Abilene Opera Assoc.	Indigent Care Fund for Taylor County	St. John's Episcopal School Headmaster
Don Bierwagen Fund for the Barbershop Harmony Society	Kenneth and Marilyn Jacobs Fund for Education	Swenson House Fund
Big Brothers Big Sisters of Abilene Fund	Marvin and Nancy Norman Jones Fund for Winters	<i>established by David and Sue Stubbeman</i>
<i>established by Norma Springer</i>	Morgan and Jessie Jones Fund for Day Nursery of Abilene and The Grace Museum	Taliaferro Fund for St. John's Episcopal School
Big Country Reentry Coalition Project Fund*	Jerry and Rozlyn Love	Dick and Beverly Tarpley Fund for Abilene Philharmonic and Abilene Zoo
Boys and Girls Club of Abilene Fund	The Matthew 25:14-46 Fund*	Taylor Jones Humane Society
<i>established anonymously in honor of Dian Graves Owen</i>	Dr. Donald McDonald Fund for Children's Health	Texas Veterans Cemetery - Vietnam Memorial (<i>non-endowed</i>)
Buffalo Gap Historic Village	Maggy Morford Fund for St. John's Episcopal School	Victor and Janet Vadney
Ruth and Bill Burton Fund for First Church of Christ, Scientist, Abilene	Mulberry Canyon VFD	Pat Meleen Vaughn
Guy Caldwell Western Heritage Fund for Hardin-Simmons University	Mulberry Canyon VFD Building (<i>non-endowed</i>)	Robert, Elsie and Roberta Watters
Martha Scott Carlson Fund for Abilene Education Foundation GIFT Grants	Jim and Bobbi Naler Fund for Abilene State Supported Living Center	Elwood B. and Shug Webb
Center for Contemporary Arts	Narrow Gate Foundation	Jim and Kathy Webster
Harold and Pat Crawford Fund for the Alliance for Women and Children	<i>established by John E. Pearson and Sons</i>	Grace Westfall Memorial
Amber and Bill Cree Fund for Abilene Zoo and Hendrick Home for Children	National Center for Children's Illustrated Literature	Wheat Family Fund for Winters
Day Nursery of Abilene	Marion and Harry Neeb Fund for Sacred Heart Catholic Church	Jim Wilburn Memorial Fund for No Need for Need, Fisher and Nolan County Areas
Ralph and Lavern Donnell	Hazel F. Nunn Fund for the Nolan County Library	Bill and Alice Wright Fund
Doscher Fund for the Episcopal Church of the Heavenly Rest	Dian Graves Owen Fund for St. John's Episcopal School	Wright Fund for Photography for The Grace Museum
J. Henry Doscher Fund for The Grace Museum	Panther Creek CISD Project Fund*	George and Marie Yaeger Fund for the Abilene Philharmonic Association
Judy Dudley Memorial GIFT Fund	Historic Paramount Theatre	
	Paramount Theatre Fund for Excellence	
	Lois Caldwell Peck Fund for Cancer Services Network	
	Rescue the Animals	
	Rescue the Animals Spay and Neuter	
	Rock Ranch Fund	
	Safe Families for Children in Abilene	

*New Fund

Agency Designated

These are designated funds established by nonprofit organizations to create a source of revenue to support their programs and/or operations.

Abilene Arts Alliance	Big Country Athletic Hall of Fame	National Center for Children's Illustrated Literature
Abilene Community Band	Big Country CASA	Paramount Theatre Memorial
Abilene Education Foundation	Brownwood Public Library	Paramount Theatre Reserves
Abilene Education-AHS Alumni Scholarship	Center for Contemporary Arts	Pregnancy Resources
Abilene Education-CHS Alumni Scholarship	Christian Service Center	Presbyterian Medical Care Mission
Chessmates: The Scholastic Chess Club of AISD	Clyde Education Foundation	Travis and Mary Katherine Smith Fund for PMCM
Royce Curtis Excellence in Education Scholarship	Coleman ISD Foundation	Sam's Place
Edwin & Agnes Jennings Teaching Excellence Award	Day Nursery - Bea Ganson	St. John's Episcopal School
Martha Kiel Scholarship	Day Nursery of Abilene Endowment for Maintenance-Sherry Lane	St. John's Episcopal School Learning for a Lifetime
Abilene Hope Haven	Day Nursery of Abilene Endowment for Building Maintenance	Patty Hanks Shelton School of Nursing
Abilene Industrial Foundation	Disability Resources, Inc.	Taylor Jones Humane Society
Abilene Library Consortium	Dyess Operation Warm Heart	Taylor Jones Humane Society Flex
Abilene Philharmonic Association	Friends of the Abilene Public Library	Texas Prairieland Foundation
Thile Walker Scholarship	Frontier Texas! Operating Endowment	Texas Trails Council, Boy Scouts of America
William Davis Scholarship	Global Samaritan Resources	Texas Trails Council BSA
Abilene Philharmonic Foundation	The Grace Museum	Texas Midwest Community Network (TMCN)
Abilene Recovery Council (<i>formerly ARCADA</i>)	The Grace Museum Facility Endowment	United Way of Abilene
Abilene Woman's Club Educational	Hendrick Hospice Care	West Central Texas Regional Foundation
Albany ISD Education Foundation	Kenley School Endowment	Wylie Bulldogs Education Foundation
Alliance for Women and Children-Elizabeth Baugh	Kenley School Endowment for Scholarships	YMCA Endowment
Assoc. of Christian Childcare Administrators	CJ Macon Scholarship Foundation	Young Audiences of Abilene Residency Program
Ben Richey Boys Ranch Foundation		Zambia Mission
Travis Cranfill Memorial Education		

Donor-Advised Funds | \$6,846,226 awarded

Donor-advised funds allow donors to recommend grants to a range of charitable causes throughout the year.

Non-Endowed

Abilene Automotive Education Alliance	Andrew David Durham	Hudson Family	Tabitha Newcomb
Abilene Country Club Employee Assistance Fund	David and Sindy Durham	John and Tina Hunter	Syd and Evelyn Niblo
Abilene Fire Dept.	Wendy Hanks Durham	In As Much	C. Christine Nichols
Gary Ackers	Bob and Laurie Eagle	Paul and Myra Johnson	Jack and Becky Rentz
David and Kay Alexander	B.J. and Lale Estes	Bennie R. and Diane Jones	Rich Family
Jim and Jerri Alexander	Ray and Star Ferguson	Keeble Family	Lynn and Carl Roeder Family
Mike Alexander	Emily T. Files Charitable	Henry and Beverly Kitzman	Senter Family Foundation
Mac and Marjorie Andrews Furniture	First Financial Bankshares Employee Disaster Relief	Mark and Diana Layton	Shelton Family Foundation
Tiffany and Craig Armstrong	Doris Miller and Don Fitzgibbons	Life to Life	Small Business of Abilene COVID-19 Relief Fund
Bahlman-Stehle Fund	Dot and Jesse C. Fletcher and Melissa Fletcher	Robert and Louise Lockhart	Sweetser Family
Rob and Julie Beckham	Gerald and Christie Galbraith	Maroney Family	T & T Family Foundation
Jody and Betsy Bellah*	Dr. Bill and Barbara Gee Gandy	Mathis Family	Kirk and Kristi Thaxton Family*
Charles and Leigh Black	Gee Family	Sandip and Mishi Mathur	Trio Sharegiver Community
Price and Nancy Brock	Master Sgt. Randy Gillespie Memorial	Mayday Fund*	Two Creeks Ranch
Carl Childers	Lee and Callie Hampton	The McDonald Family	James S. Westfall Memorial
Condley and Company	Carol and Bill Haynes	McM Baseball Alumni Association	Stanley and Claudie Wilson
Dave and Laura Copeland	Bruce and Nancy Hildebrand*	Bobby and Doris Melson	Allen and Mary Wright
Bart and Jackie Cox	Leonard R. Hoffman	Melson Family	Bill and Alice Wright
Ben M. and Bonnie Davis	Shay Shelton Hoffman	Memorial Day Fund	
Davis-Kinard		Barbara and Bynum Miers	
		Kayren and John Mingus	
		<i>in Memory of Roy Helen Mingus Ackers</i>	

*New Funds

Endowed

Alexander Families' Giving Fund	Paul and Kelly Cannon	Eleanor and Robert Hoppe	Lars and Anna Moore
Janice and Bob Allen	Jay and Nancy Capra	Inspired Services	Kathy and Phil Morehead
Lynn and Barbara Anderson	Deborah Carson	J2K Charitable	Terrell Tone Owen Memorial
Anonymous	Coleman Family	JVM Family Fund	Bush Ramsey
Anothan Fund	Matt and Kristi Cooley	Dwain and Mona Jones Foundation	Rick and Pam Rhodes Family
Steve Arthur Family Foundation	Sally and Bill Core	Jane and Otis Jones	Charles E. and Erin Schroeder Family Charities
Dr. Terry Bawcom Family	Dr. Brady Cox Memorial	Jeff and Susan Jones Family	Nellie Parramore Sellers
Jeannette and Josh Black	Denny Family Foundation	Blake Alan Korman Memorial	Scott and Michelle Senter Charitable
Jane Varner Beard	Gil and Holly DeShazo Charitable	Gerald and Bettye Lawler	H.L. Shaw Memorial
Bob and Peggy Beckham	Becky Glass Fellows	James V. Lawrence Estate	Jennifer Gilley Stringer
John and Carolyn Beckham	Files Family Foundation	Leadership Abilene Community Impact Fund	David Taubert Memorial
Rob and Julie Beckham	Emily T. Files	M.A.D. Foundation	Ruby and Raymond Thomason, Sr. Foundation
Bridwell Family Foundation	J.B. and Patricia Fooshee	Tim and Debbie Manley	Trio Sharegiver Community
Tucker and Gina Bridwell	Lee and Callie Hampton	Mansefeldt Group*	Weatherl Family
Tucker S. Bridwell	Barbara B. Hardy	Lynn Beckham Marderosian	Wood Family
Ruth and Bill Burton Family	Kaye Price-Hawkins and Joe Hawkins	Raymond and Gloria McDaniel	Bill and Alice Wright Family Foundation
Clifton and Shirley Caldwell	Jean K. Hays Charitable	Hillary Moore	
Ruth and Lee Caldwell Family	Delbert C. and Patricia A. Hess		

*New Funds

Unrestricted Funds | \$1,013,632 awarded

These funds support any range of charitable causes and are not restricted to a designated field, allowing the Foundation flexibility to respond to emerging needs.

Abilene Alpha Endowment	Joe Ed and Jo Canon Fund	Paul and Myra Johnson Fund	Sam and Susan Reeves Fund
Administrative Endowment II	Jimmie and Mary Lynn Cantrell Fund	A.V. Jones Family Fund	Mel Richards Memorial Fund
Administrative Endowment II	Jane Childers Fund	Bennie and Diane Jones Fund	Lila and Bill Senter Fund
Jim and Jerri Alexander Fund	Ruth Ann Choate Legacy Fund	Cearley and Jane Kinard Fund	Steve and Debbie Senter Family Fund*
Ruth Guitar Alexander Memorial	Community Foundation Memorial Fund	Cearley and Ruby Kinard Fund	Carl S. Shoults, Jr. Fund
Benjamin T. Allen Memorial	Harold and Pat Crawford Fund	Derwood and Billie Langston	Susan Stroud Fund
Mildred Morris Austin Memorial	J Neil Daniel Fund	William R. Lutz Memorial Fund	Bob and Elaine Surovik Fund
Richard and Betty Bacon Fund	Ray and Kay Denkhoff Charitable Fund	J.D. and Elsie Magee Family Fund	Jim and Doris Taylor Fund
Carolyn and Harwell Fund	Joy and Gary DeShazo Fund	Eileen Taylor Massey Memorial Fund	Gail and Howard Tobin Fund
Grady and Ann Barr Fund	Ralph and Lavern Donnell Fund	Tom McAlister and Scott Senter Fund	Pat Meleen Vaughn Fund
Bob & Peggy Beckham Family Fund	J. Henry Doscher Charitable Fund	Raymond and Gloria McDaniel Fund	Coy and Elizabeth Gene Warren Fund
Mrs. L.H. Beckham Fund	Mack and Helen Eplen Memorial Fund	SM and Portia Moore Fund	Whitten Family Fund
Arthur, Dana and Cindy Beitscher Memorial Fund	Dr. B.J. and Lale Estes Fund	Bob and Maggy Morford Fund	Howard and Hope Wilkins Fund
Glenn and Lylia Bennett Fund for Nolan County	Louis S. Gee and Bobbie A. Gee Fund	Moss Charities Fund	Allen and Mary Wright Fund
Tucker and Gina Bridwell Fund	Larry and Mary Gill Fund	Linda Murphy Fund	John A. Wright Memorial Fund
Cade and Katie Browning Fund	Jean K. Hays	Syd and Evelyn Niblo Fund	Dr. T.D. Young Fund
Ruth and Lee Caldwell Fund	Robert and Marilyn Hitt	Dian G. Owen Fund	
	Eddie and Nelda Hodges Fund	Dr. Jack and Joy Ramsey Fund	
	Ralph and Nelle Hooks Fund	Wayne V. and Marie Ramsey Fund	

*New Funds

Scholarships | \$652,000 awarded

Donors can designate these funds to award scholarships for college or post-graduate education.

AAUW Endowed Scholarship
Ashley and Sara Abel Memorial Scholarship
Abilene A&M Club Scholarship
Abilene Alumnae Panhellenic Assoc., Missy Bridwell Memorial Scholarship
Abilene Founder Lions Club, A.E. Wells Scholarship
Abilene Founder Lions Club, Randell and Evangeline Watkins Scholarship
Abilene Geological Society Scholarship
Abilene Regional Medical Center Auxiliary Scholarship
Advanced VoIP Solutions Scholarship
Bob Alvis Memorial Scholarship
Wesley Armstrong Memorial Scholarship*
Mary Bailey Memorial Scholarship
Alistair Baldwin Scholarship
Perry Bentley Memorial Scholarship
Big Country Athletic Hall of Fame Scholarship
Nancy and Ted Paup Big Country Hall of Fame Scholarship
Big Country County Medical Society Alliance Scholarship
Bill and Dale Burns Scholarship*
Ruth and Bill Burton Memorial Scholarship
Herman Ray (Buz) Buzbee, Jr. Memorial Music Scholarship
Coach Childress Memorial Scholarship
Marguerite and Ike Chism Scholarship
Roy Churchill Memorial Scholarship
Clack Educational Scholarship
Horace M. Condley Scholarship
Gilbert Cook Memorial Scholarship
Tony Daniel Memorial FCA Scholarship*
Davis Kinard-Kate Nutter Memorial Scholarship
Wilburn H. "Blue" Denham Memorial Scholarship
Marie Denham Memorial Scholarship
Ralph and Lavern Donnell Scholarship
J. Henry Doscher, Jr. Scholarship
From Harm to Home Scholarship
established by Angelini Nicolini
Gold Star Memorial Scholarship
Greater Abilene Ministers Alliance Scholarship
Kemper Scott Hamilton Memorial Scholarship
Dr. Edgar Martin Harp Memorial Scholarship for Medicine
The Dollie Lane Harp Memorial Scholarship for Classical Music
Haskell County Scholarship

Jay Hatcher Memorial Scholarship
Dr. Dean Hawkins Scholarship
Jean and Curly Hays Scholarship
Bob R. Hefner Scholarship
Hispanic Leadership Council Scholarship
Hispanic Senior Recognition Scholarship
Floy Hodge Scholarship
Rodney Holder Memorial Scholarship
Lady Clyde Hooper Memorial Scholarship
RC and Elizabeth Hoppe Memorial Scholarship
James P. Hopper Memorial Scholarship
Casey Leo Huff Memorial Scholarship
Fred Lee Hughes Memorial Scholarship
Virginia Kiker Hughes Memorial Scholarship
Independent Insurance Agents of Abilene Scholarship
Pearl Jackson Scholarship
Ross Jones Memorial Scholarship
GySgt. Robert K. Keller Memorial Scholarship
Margaret Wheeler Kennedy Scholarship
Eula M. Kruse Scholarship
Tom Kutch Memorial Scholarship
Brock Latham Memorial Scholarship
Cathy Springer Leavell Memorial Scholarship
LULAC Council 605 Scholarship
McClellan "Think On" Memorial Scholarship
Raymond A. McDaniel Memorial Scholarship
McMahon Surovik Suttle, P.C. Scholarship
J. Middleton Memorial Scholarship
Jack Mildren Memorial Scholarship
Mary and George Minter Memorial Scholarship
Todd Moore Memorial Scholarship
Zach Moore Memorial Scholarship
Chuck and Doris Moser Memorial Scholarship
NAIFA - Abilene Assoc. of Ins. Financial Advisors Scholarship
Jack and Donna Nall Band Scholarship*
Nolan County Foundation Scholarship
Hazel Nunn Scholarship Endowment for HSU
Hazel Nunn Scholarship Endowment for TSTC
Tillie Odam Memorial Scholarship
Janet Parkey Memorial Scholarship
Petroleum Club of Houston Scholarship
Hollis Hayes Pinkston Scholarship
Randy Polk Memorial Endowed Scholarship
Barney Popnoe Memorial Scholarship
Karen Adair Price RN Memorial Scholarship*
Jesse M. and Bernice M. Pyeatt Scholarship
Reach for a Difference Scholarship

Rentech Boiler Systems, Inc. Scholarship
Jane A. Rhodes Scholarship
Zach Robinson Memorial Scholarship
Ginny Ryan Memorial Scholarship
Senora Stacy Horton Sanchez Scholarship
Leo and Piney Scott Scholarship
Patty Hanks Shelton School of Nursing Scholarship
SHS Class of 1961 Scholarship
SHTX Nathan & Norma Belcher and Zinn Lindsey Scholarship
SHTX Amy Bell Scholarship Fund*
SHTX Darlene Hicks Memorial Scholarship
SHTX Ben Tyner Memorial Scholarship
Barbara and Norman Smart Memorial Scholarship
Catherine Aileen Smith-Jones Memorial Scholarship
Kim and Jim Snyder Scholarship for Texas A&M
Stock Horse of Texas Scholarship
Hal and Jean Stockton Scholarship
Stone Owl Scholars Scholarship
Tarpley Family Scholarship*
Texas Society of CPA's (Abilene Chapter) Scholarship
Texas Tech Center For Excellence Scholarship
Johnathan Tscharr Memorial Scholarship
Harold Dean Wade Memorial Scholarship
Sam and Ellen Webb Albany Heritage Scholarship
WestTex Drilling Co., Robert B. Cockrell Memorial Scholarship
West Texas Fair and Rodeo Queen Scholarship
West Texas Hereford Association, Curly Hays Scholarship
Nicholas Whitaker Memorial Scholarship
Cleve Whitener Memorial Scholarship*
Kay Whitton and Lessie (McCormick) Terry Scholarship
Ruth Hatcher and Joe Williamson Memorial Music Scholarship
Stanley and Claudie Wilson Scholarship
Winters Area Foundation Community Scholarship
Winters Area Foundation Scholarship
Winters Area Red Raider Scholarship
Mabel Winton Educational Scholarship
Abilene Christian University Scholarship Endowment
Hardin-Simmons University Scholarship Endowment
McMurry University Scholarship Endowment

*New Funds

Field of Interest Funds | \$623,605 awarded

Grants from these funds support a specific charitable field, according to the donor's interest.

Abilene Fund for the Arts
Abilene Fund for Helping Others
Abe and Saret Allen Critical Health Care
APC Endowment for Mental Health
Apostle Paul Fund
Arch and Patti Batjer Fund for Children and Youth
Arch and Patti Batjer Health Care
Beckham Family Fund for Youth and Elderly in Need
E. G. and Janell Cockerell Fund for Animals
Mary L. Reams Collins Memorial Fund for Women's Health
Diane Denkhoff Fund for Children's Health
Lale and BJ Estes Human Service Future Fund
Elsie Lou and Edward H. Martin Memorial Fund for Elderly Care
Raymond and Gloria McDaniel Fund For Youth
NAIFA - Abilene Fund for Children
Norman-Stevens Memorial Fund for Winters
Gabiella Pace Endowment for Early Childhood Education

Pete and JoAnn Peterson Fund for Children and Health
Juanita T. Pollard Cultural Serendipity Fund
Steve and Nita Slaton Fund for Humane Treatment of Animals
Pat Meleen Vaughn Fund for Celebration of Life
Pat Meleen Vaughn Fund for Humane Treatment of Animals
Volunteer Fire Dept. Endowment Funds
Brown County
Callahan County
Coleman County
Eastland County
Shackelford County
Taylor County
Paul and Vera West Fund for Children
Charles and Sue Simmons White Endowment for the Needy
Women's Fund for Health and Empowerment

REGIONAL FUNDS

Albany:
AVJ Foundation

Coleman:
Coleman County Foundation
Friends of the Coleman Foundation Fund

Nolan County:
Nolan County Foundation
Discretionary Endowment Fund

Winters:
Winters Area Foundation Fund



PO Box 1001 • Abilene, TX 79604

www.cfabilene.org

cfa@cfabilene.org

Ph 325-676-3883



2021-2022

Board of Trustees



Carolyn Beckham
Community Volunteer



Jeff Blanks, CPA
Board Chair, Vice President/
Chief Financial Officer,
Matthews Office



Deonna Galbraith
Community Volunteer



Jason Hall
Shareholder
McMahon, Surovik, Suttle P.C.



Lee Hampton
Community Volunteer



Melody Hunt
President
Hunt Direct Marketing, Inc.



David McQueen
Lead Pastor,
Beltway Park Church



Chris Montoya, CFA
Senior Vice President
First Financial Trust - Abilene



Ian Nickerson
Minister
Minda Street Church of Christ



Mindy Patterson
Deputy City Manager
City of Abilene



Sue Schackmuth
Community Volunteer



Steve Senter
Partner
CBS Insurance, LLP



David Swearingen
Business Consultant
Retired Vice President,
Johnson & Johnson



Sam Vinson
President
Pine Street Capital



Elizabeth Wagstaff
Attorney

Staff

Katie Alford
President / CEO

Megan Dobbs
Marketing and
Communications Director

Patrick Lewis
Finance Director

Jasmine McCabe-Gossett
Donor Services Director

Kassidy Nygaard
Grants and Operations
Associate

Michelle Parrish
Grants Director

Barbara Richert
Office Administrator

Jennifer Weber
Scholarship Director